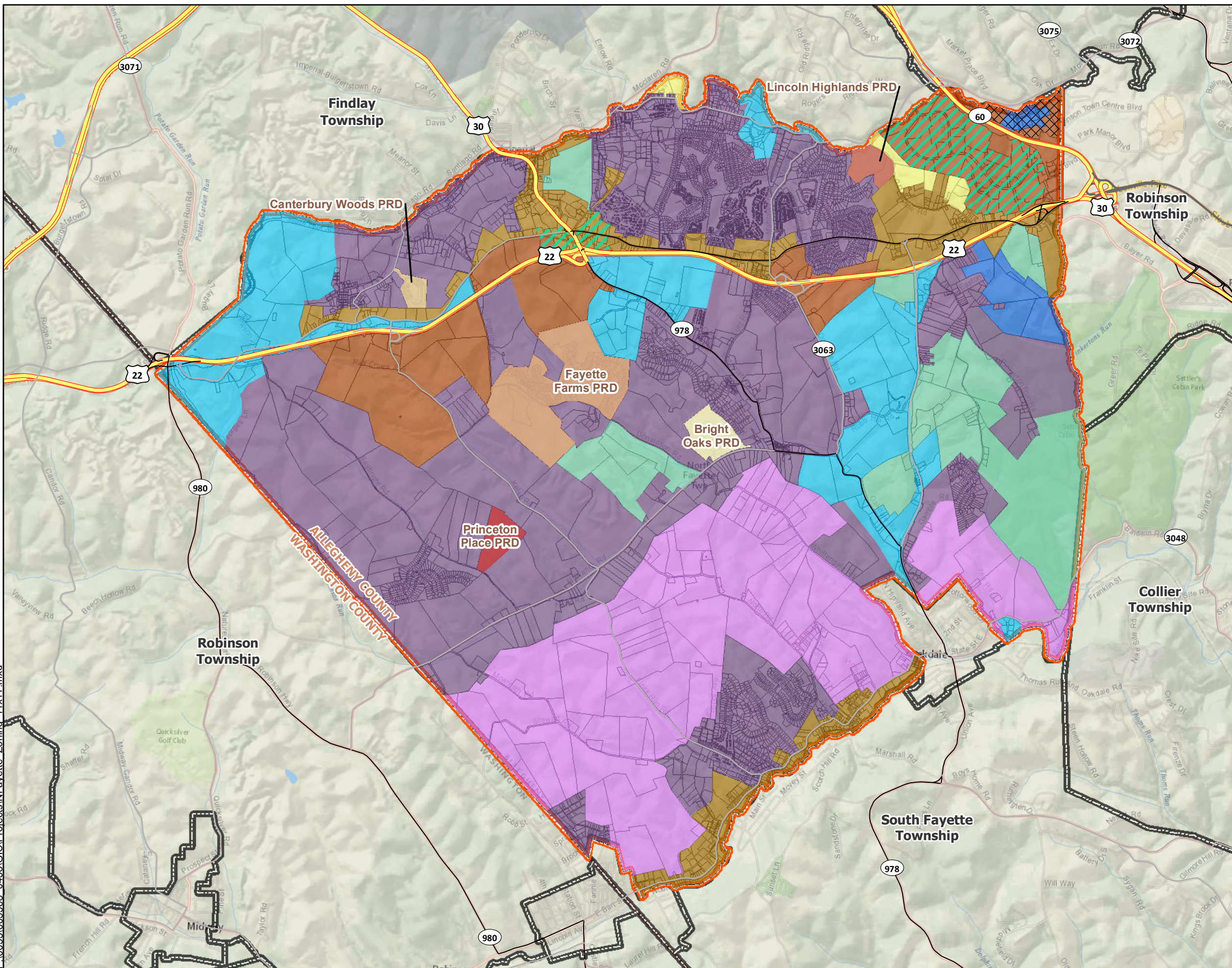


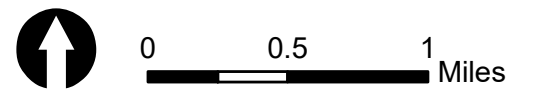
P:\0033\003368_0438\GIS\Projects\NFayette_Zoning_11x17.mxd



North Fayette Township Zoning

Allegheny County, Pennsylvania

-  Bright Oaks PRD
-  Canterbury Woods PRD
-  Fayette Farms PRD
-  Lincoln Highlands PRD
-  Princeton Place PRD
-  Streetscape Enhancement
-  Airport
-  CE Civic and Education
-  B-1 Neighborhood Commercial
-  B-2 General Business
-  I-1 Light Industrial
-  I-2 Heavy Industrial
-  MU Mixed Use
-  R-1 Single Family Residential
-  R-2 Suburban Residential
-  Parcel boundary
-  County Boundary
-  Municipal Boundary



Mapping derived from data provided by ESRI, PennDOT, and Allegheny County.

4/7/2021	PM: LL	GIS: ALV	QA: LL	R003368.0438
----------	--------	----------	--------	--------------

HRG
 Herbert, Rowland & Grubic, Inc.
 Engineering & Related Services
 An Employee-Owned Company

200 West Kensing Drive
 Suite 400
 Cranberry Township, PA 16066
 724.779.4777 [phone]
 724.779.4711 [fax]
 www.hrg-inc.com